



TERRANOVA

CRANE & HEAVY HAULAGE

Volvo FH12 – Hiab 800 (#232)

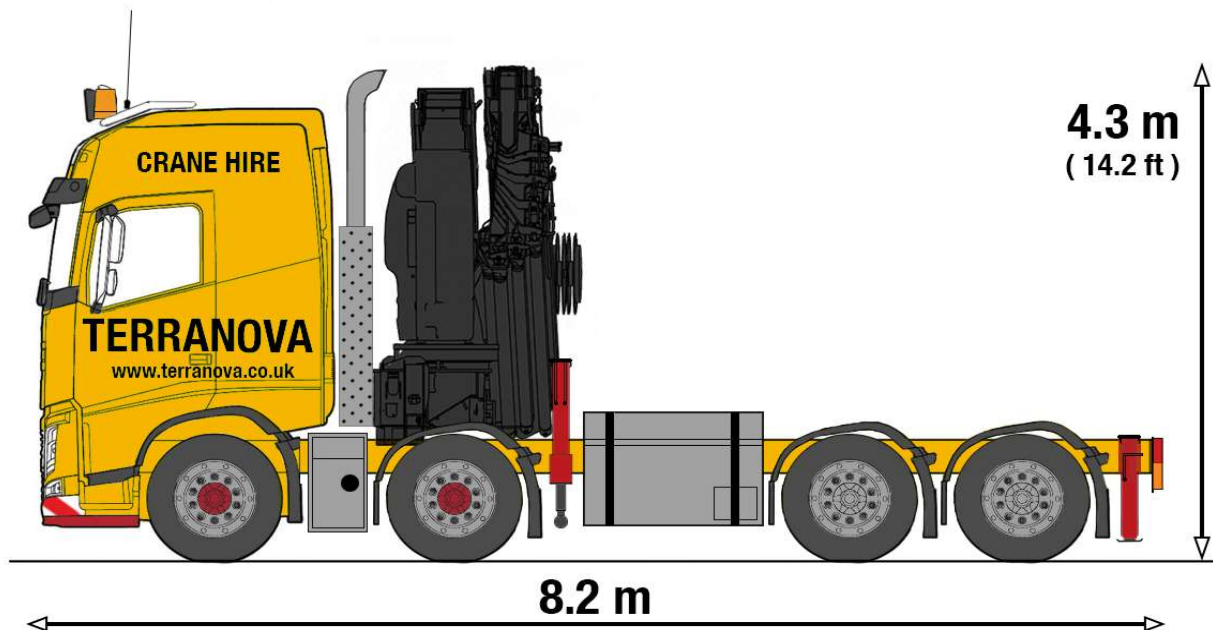
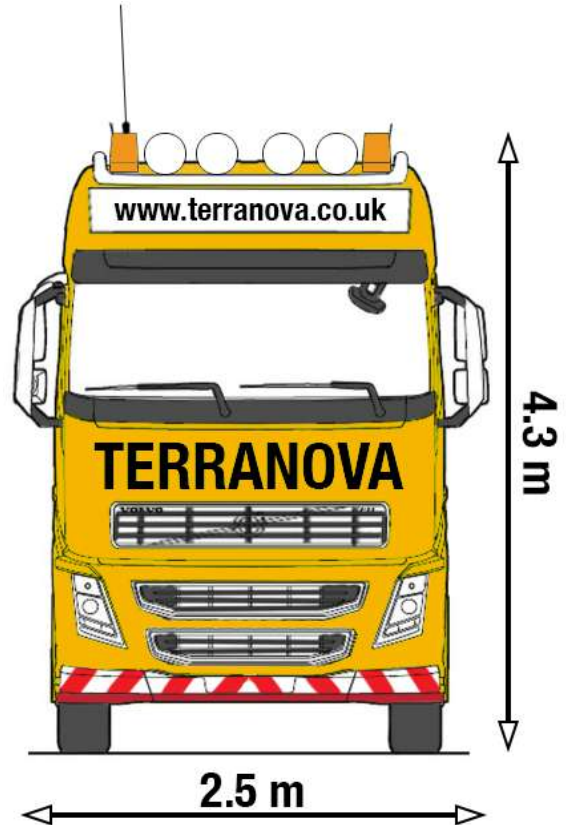


Hiab XS 800 + Jib 135X-4
Two flat bed configurations, compact
rigid and long articulated.
4 wheel steering tractor unit, 6 wheel
steering articulated trailer.

T : +44 (0) 1252 854 596
E : hello@terranova.co.uk
W : www.terranova.co.uk

#232 - Volvo FH12 - HIAB 800.

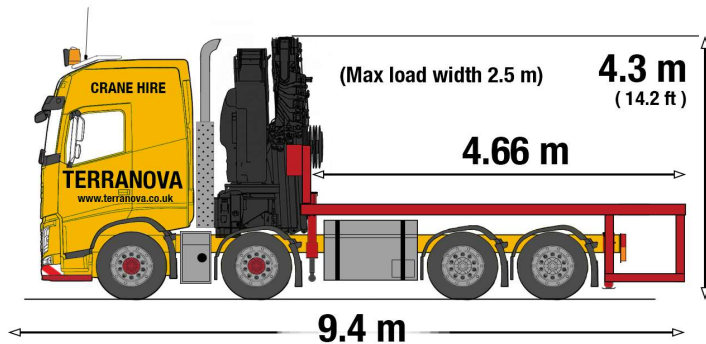
- Heavy haulage lorry
- Hiab 800 + Jib 135X-4 with MRC of 18te, 29.6m height reach and 26.8m length reach (lifting 1.38te)
- Long articulated bed with rear wheel steering
- Compact rigid bed



#232 - Volvo FH12 – Flat Beds.

Compact Rigid Bed (custom build)

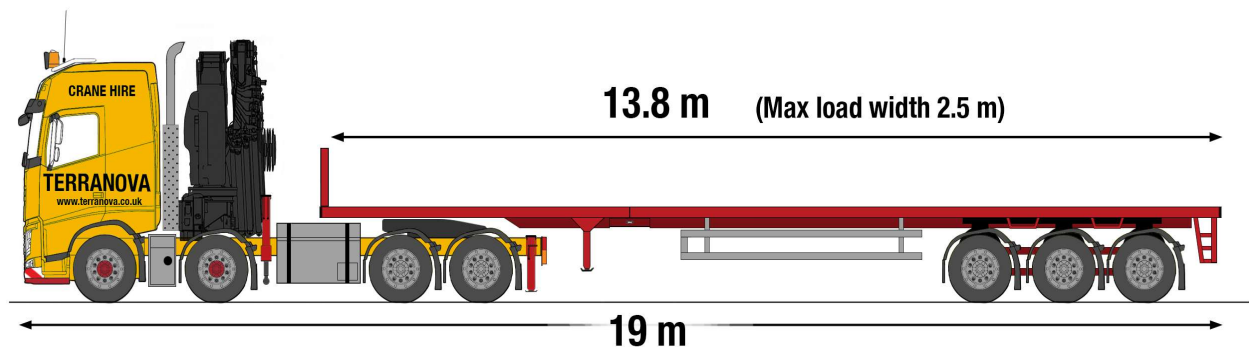
Our compact rigid flat bed is ideal for smaller loads where the space at the pick up or delivery site is tight. With this shorter rigid bed our driver can get closer to the load without the need for additional hardware.



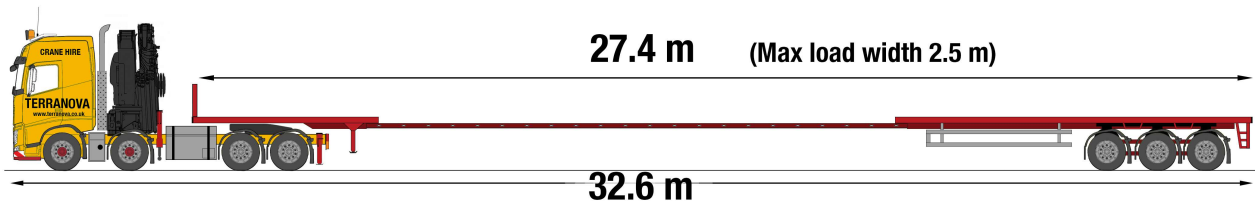
Long Articulated Bed (specialist build)

Our large articulated flat bed is perfect for very large loads. With all wheel steering on all three of its rear axles this long flat bed is very manoeuvrable for its size, especially when operated by our very skilled drivers.

Standard Configuration



Extended Configuration



#232 - Volvo FH12 – HIAB 800 with Jib 135X-4

Capacity and performance

Hydraulic boom extension	13.6 (m)	
Lifting height above installation level hydraulic		29.6 (m)
Slewing torque	69 (kNm)	
V80 Slewing speed	10 (°/s)	
Slewing angle	Continuous (°)	
Lifting speed	0.9 (m/s)	
Lifting capacity with ADC	696 (kNm)	

Standard lifting capacity at standard outreach with ADC

3.8 (m) - 18000 (kg)
4.4 (m) - 16100 (kg)
6.0 (m) - 11500 (kg)
7.8 (m) - 8500 (kg)
9.7 (m) - 6600 (kg)
11.7 (m) - 5300 (kg)
13.7 (m) - 4500 (kg)
15.8 (m) - 3800 (kg)
17.9 (m) - 3300 (kg)

Jib hydraulic outreach	26.9 (m)
------------------------	----------

Jib standard lifting capacity at standard extension

20.7 (m) - 1960 (kg)
22.0 (m) - 1820 (kg)
23.5 (m) - 1680 (kg)
25.2 (m) - 1560 (kg)
26.8 (m) - 1380 (kg)

#232 - Volvo FH12 – HIAB 800 with Jib 135X-4

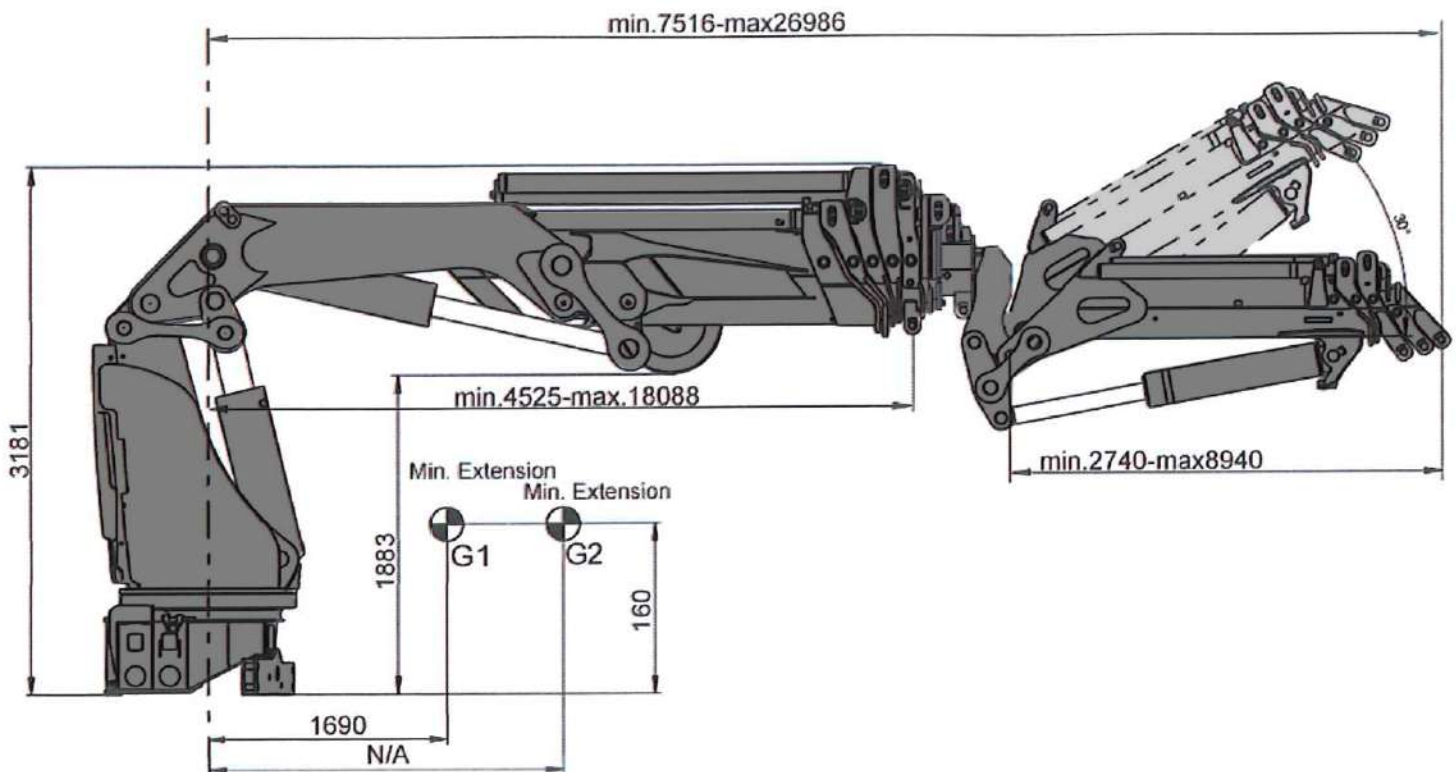
Functional demands

Recommended oilflow low	90 (l/min) V91M Fixed
Recommended oilflow high	140 (l/min) V91M Variable
Working pressure	32 (MPa)
Max slope viable at full capacity	4 (°)
Oil in tank	200 (l)
Tank capacity	260 (l)

Weights and measurements

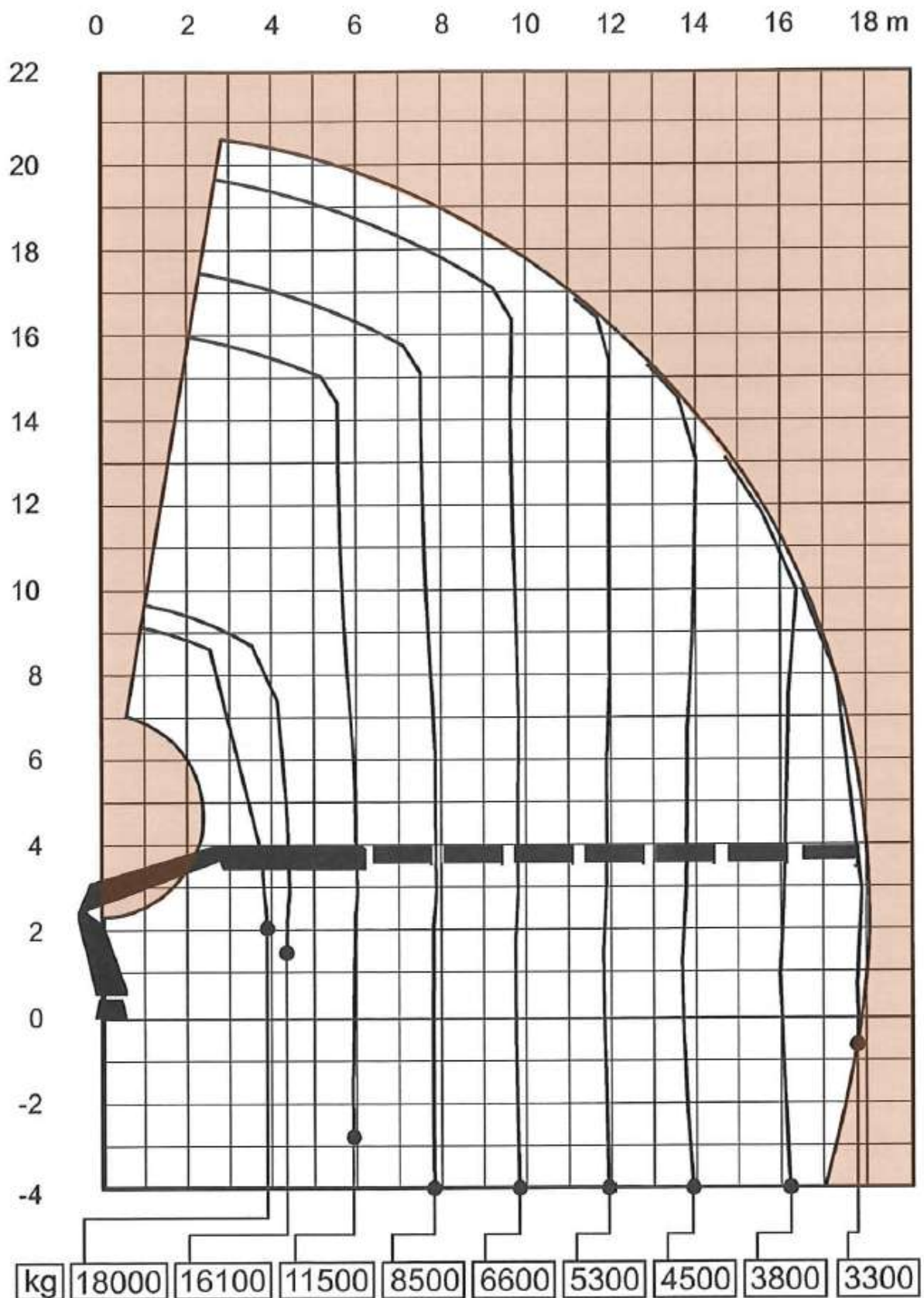
Height in folded position	2909 (mm)
Width in folded position	2500 (mm)
Installation space needed	1734 (mm)
Weight of crane with Jib	8195 (kg)

Side View Unfolded Stretched



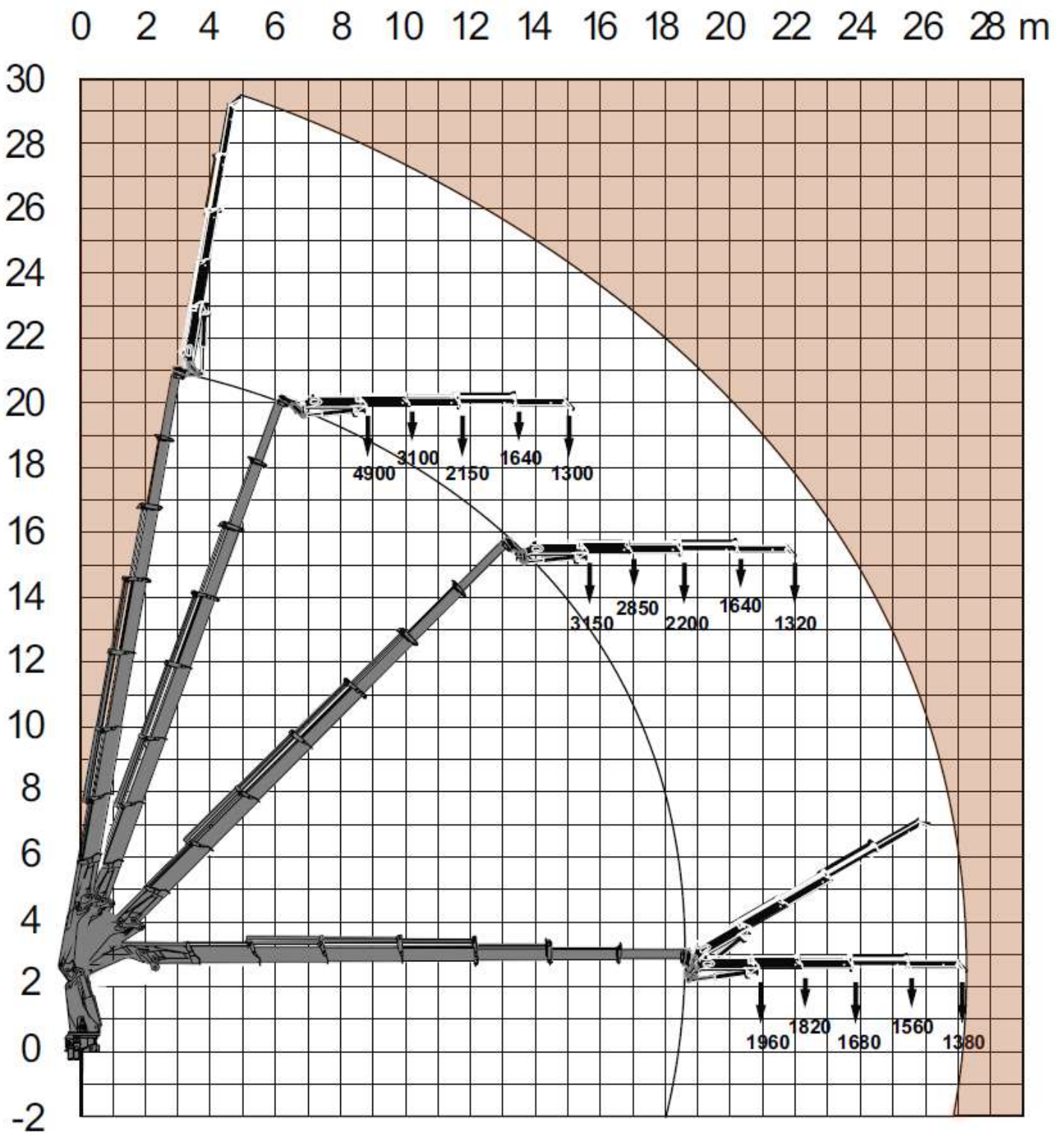
#232 - Volvo FH12 – HIAB 800 with Jib 135X-4

Load Diagram



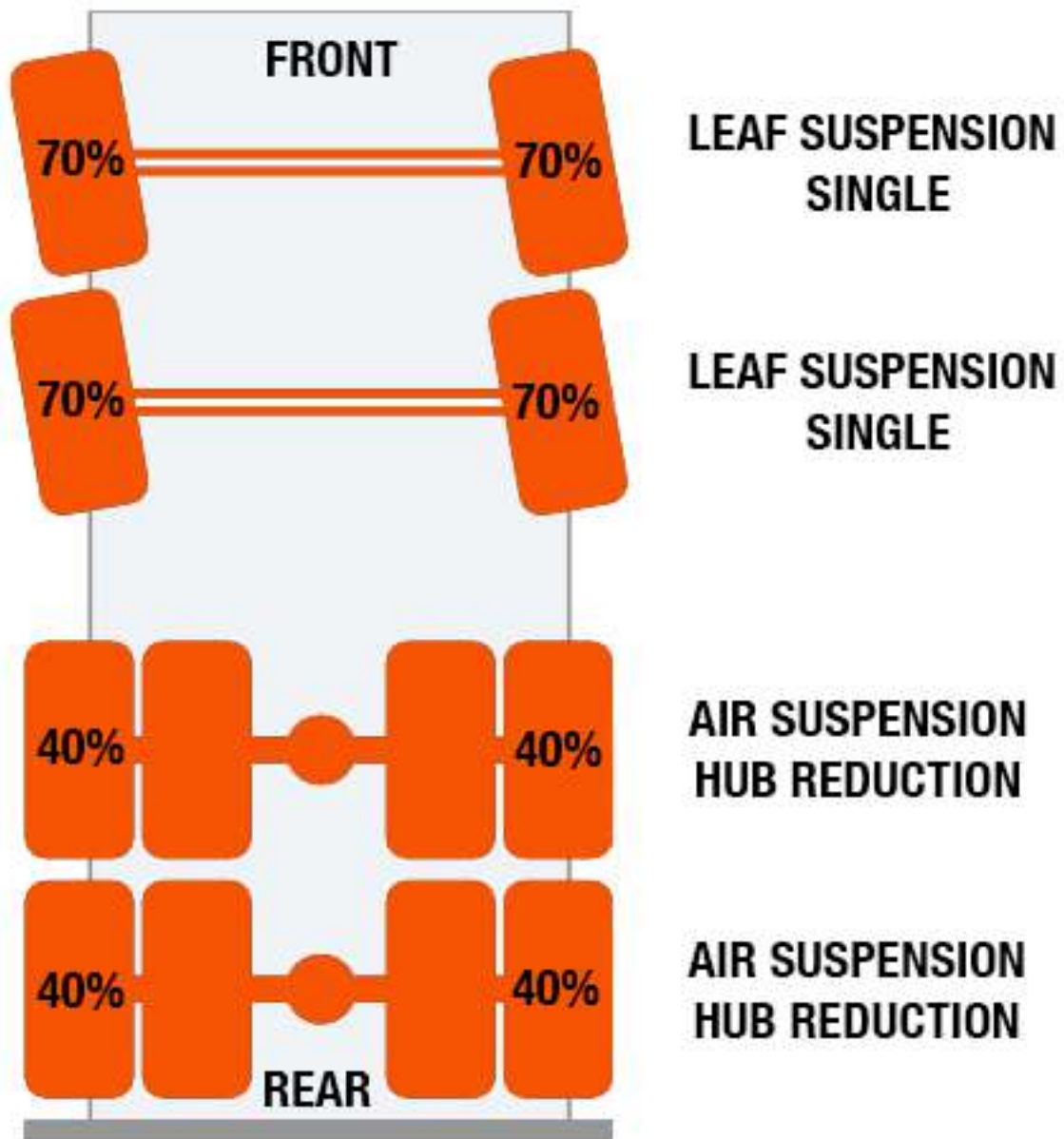
#232 - Volvo FH12 – HIAB 800 with Jib 135X-4

Load Diagram



#232 - Volvo FH12 – Axle Configuration

Our Volvo FH12 articulated tractor has an 8 wheeled configuration, with 4 rear drive and 4 front steering wheels. Each wheel is designed to handle the following load ratios.



#232 - Volvo FH12 – Specs Overview

- Flat Beds
 - Compact Rigid, 4.66m length, 2.5m wide
 -
 -
 - Articulated, 19 m length, 2.5m wide
- Wheel configuration
 - FH12 tractor unit with 8 wheels, 4 driven, 4 steering
 - Articulated trailer has 6 wheels, all with steering
- HIAB
 - MRC, 18 te (at 3.8 m)
 - Max Hydraulic boom extension, 13.6m
 - Max outreach, 17.9m (3.3 te)
 - Lifting capacity with ADC, 696'000 Nm
 - Jib lifting capacity, 1.38 te at 26.8 m
 - Max lifting height, 29.6m



