

# TERRANOVA GROUP



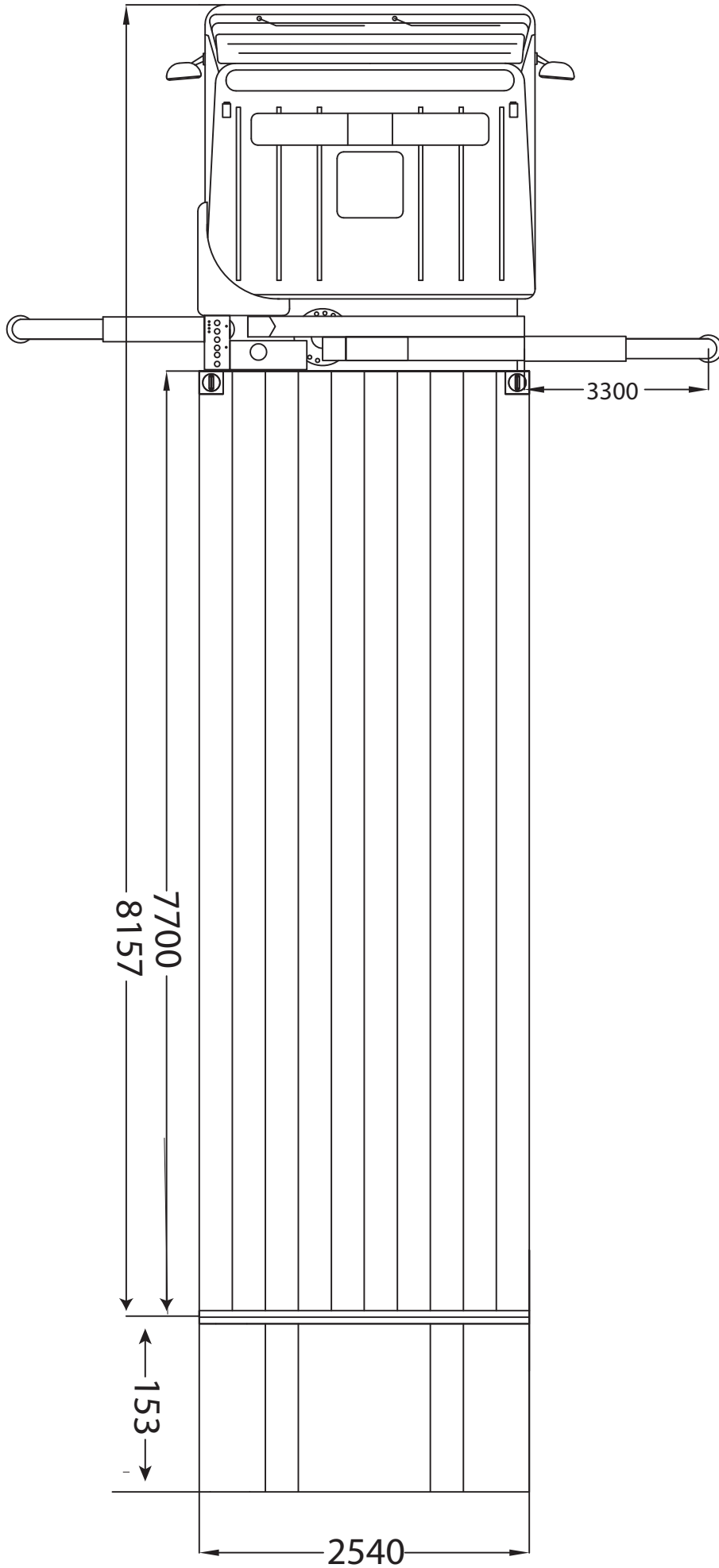
SCANIA  
Fleet Number 2GH

HIAB'S

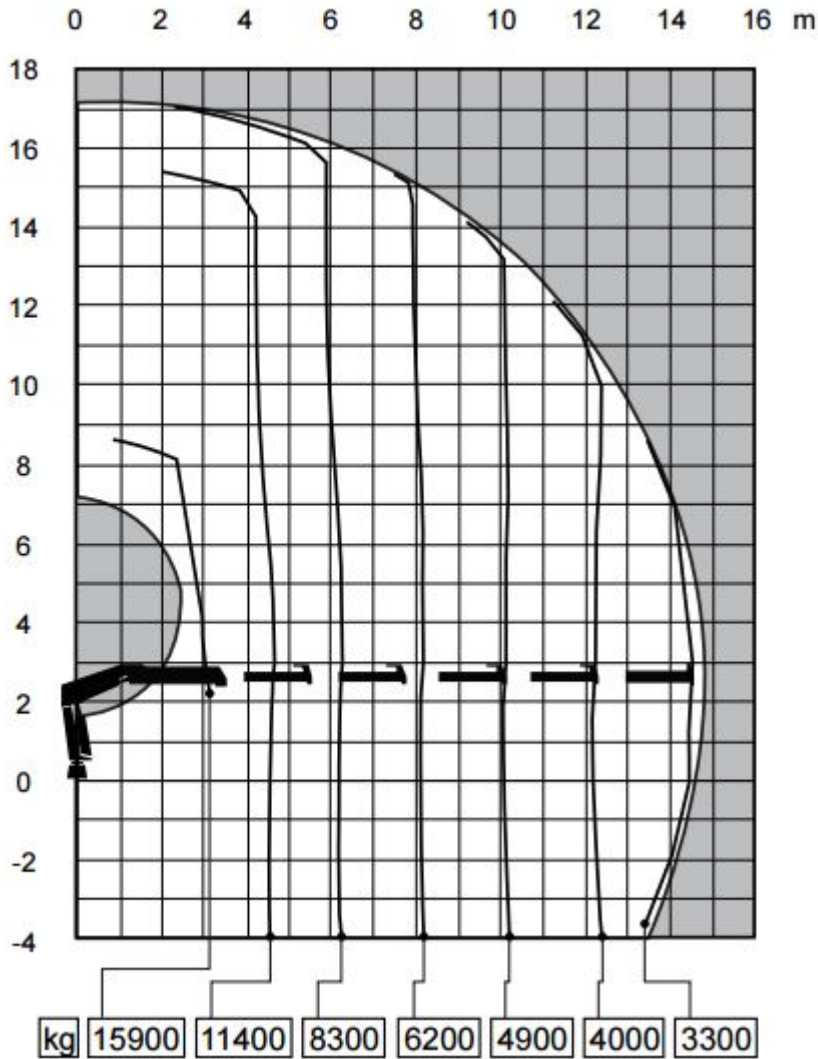


This vehicle is fitted with a Pär Åkerhielm crane with remote control and four hydraulic in/out outrigger legs, V&A extensions and hook application. Crane reach and capacity kg

This vehicle is fitted with a Pär Åkerhielm crane with remote control and four hydraulic in/out outrigger legs, V&A extensions and hook application. The payload for this vehicle is 11 tonne.



## Load Diagram



## Capacity and performance

Lifting capacity with ADC	525 (kNm)
Standard lifting capacity at standard outreach with ADC	3.2 (m) - 15900 (kg)
	4.7 (m) - 11400 (kg)
	6.3 (m) - 8300 (kg)
	8.2 (m) - 6200 (kg)
	10.2 (m) - 4900 (kg)
	12.4 (m) - 4000 (kg)
	14.7 (m) - 3300 (kg)

Hydraulic boom extension 10.1 (m)

Lifting height above installation level hydraulic 17.3 (m)

Slewing torque 60 (kNm)

V80 Slewing speed 10 (°/s)

Slewing angle Continuous (°)

Lifting speed 1.1 (m/s)

## Functional demands

Recommended oilflow low 90 (l/min) V91M Fixed

Recommended oilflow high 140 (l/min) V91M Variable

Working pressure 32 (MPa)

Max slope viable at full capacity 5 (°)

Oil in tank 200 (l)

Tank capacity 260 (l)

## Weights and measurements

Height in folded position 2551 (mm)

Width in folded position 2498 (mm)

Installation space needed 1520 (mm)

Weight of crane 5550 (kg)