



# TERRANOVA

CRANE & HEAVY HAULAGE

## Maeda MC305C Minicrane



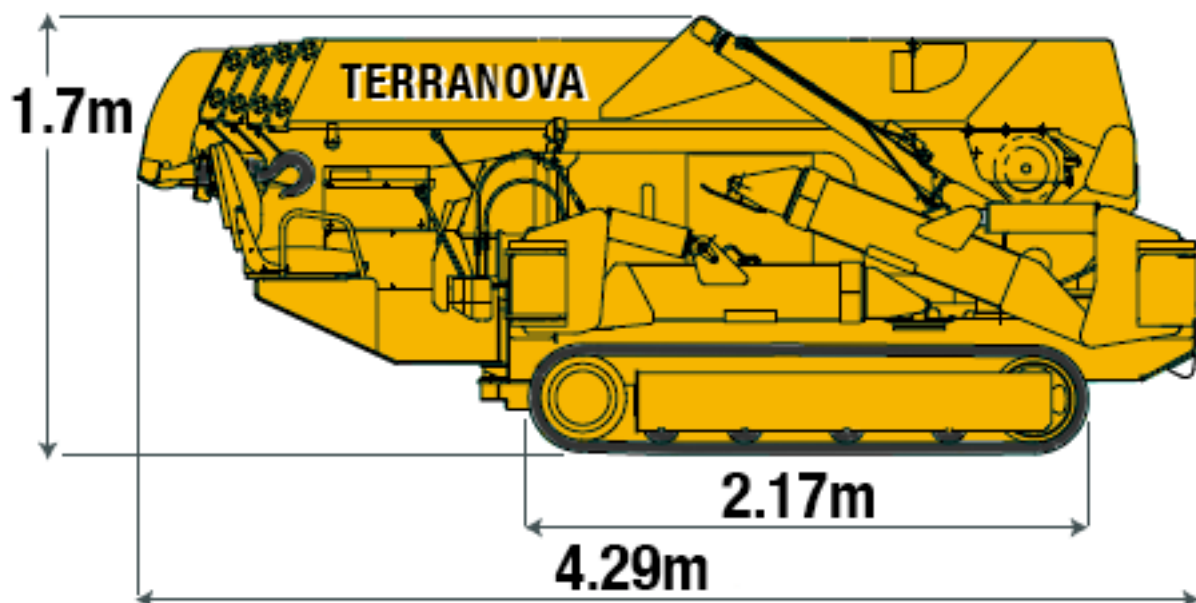
A compact 2.98t Minicrane with a 12.5m main boom. Designed for versatility and to work in all kinds of places. Easily manoeuvring on its rubber tracks within buildings. The 2 speed winch can reach loads 64m below the boom.

T : +44 (0) 1252 854 596  
E : [hello@terranova.co.uk](mailto:hello@terranova.co.uk)  
W : [www.terranova.co.uk](http://www.terranova.co.uk)

# CRANES

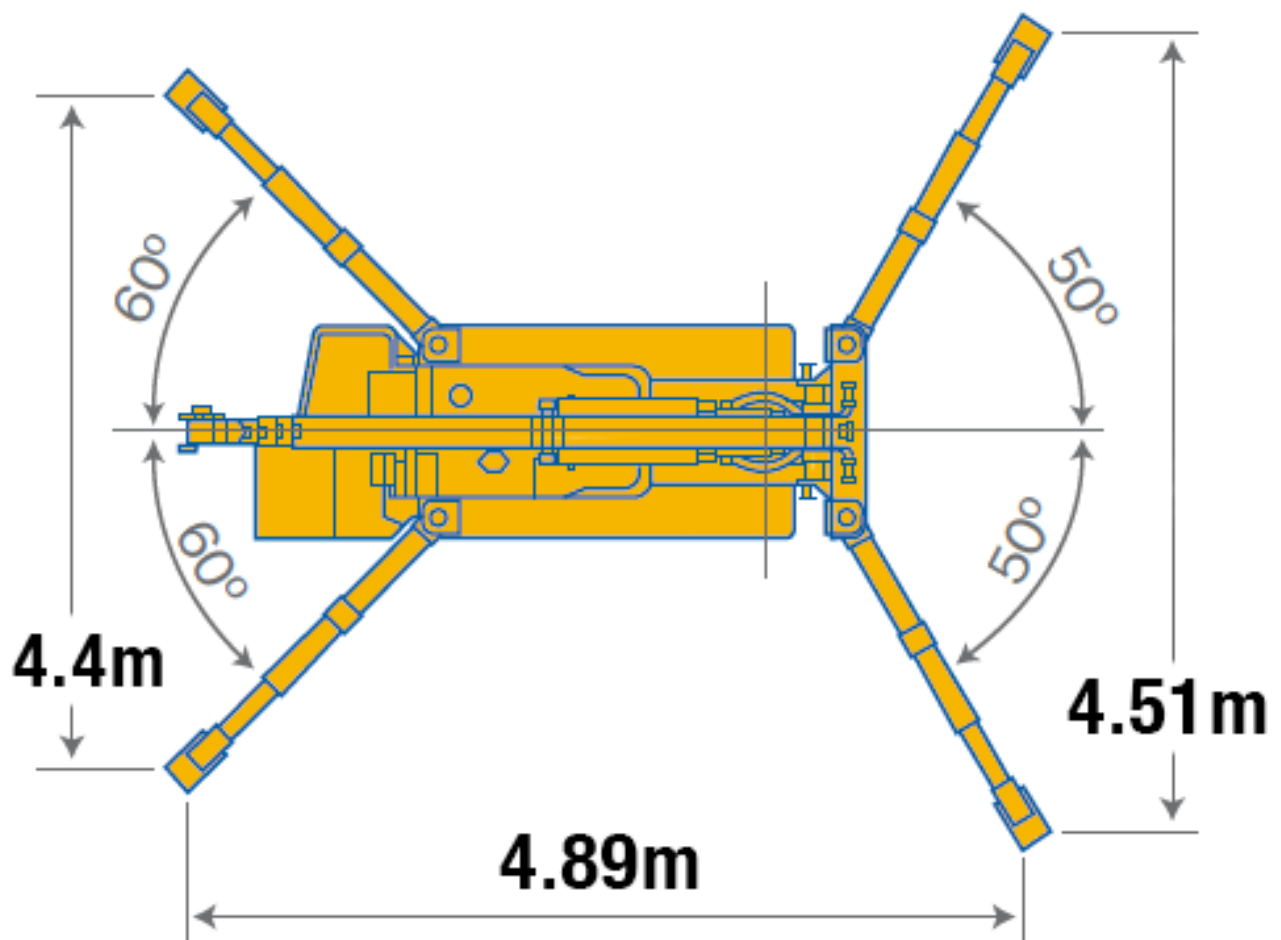
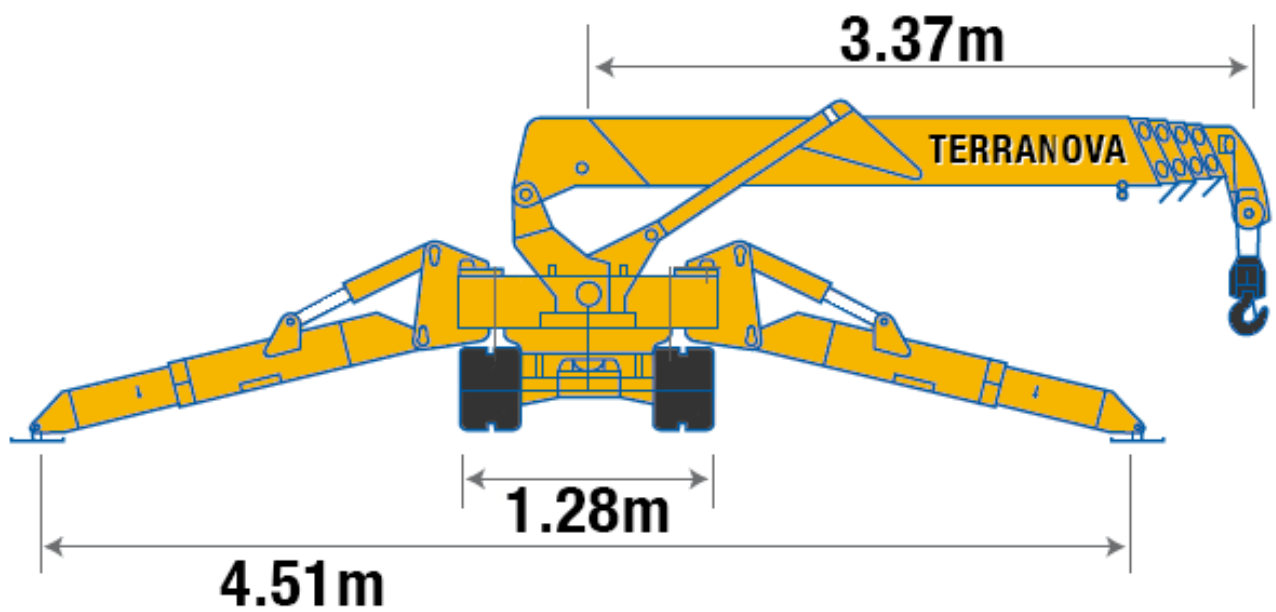
## Maeda MC305C

- 2.98te Max Rated Capacity  
12.52m Max Working Height  
12.16m Max working radius
- Designed to operate in narrow places where space is restricted.  
width < 128cm wide (4ft 3inches),  
height < 170cm tall (5ft 7inches) and  
weight of only 4080kg.
- Can work in all sorts of tight locates  
from shopping malls and  
subterranean spaces
- Quick and easy to setup
- Full 360 degree rotating boom
- Digital Feedback Remote Control

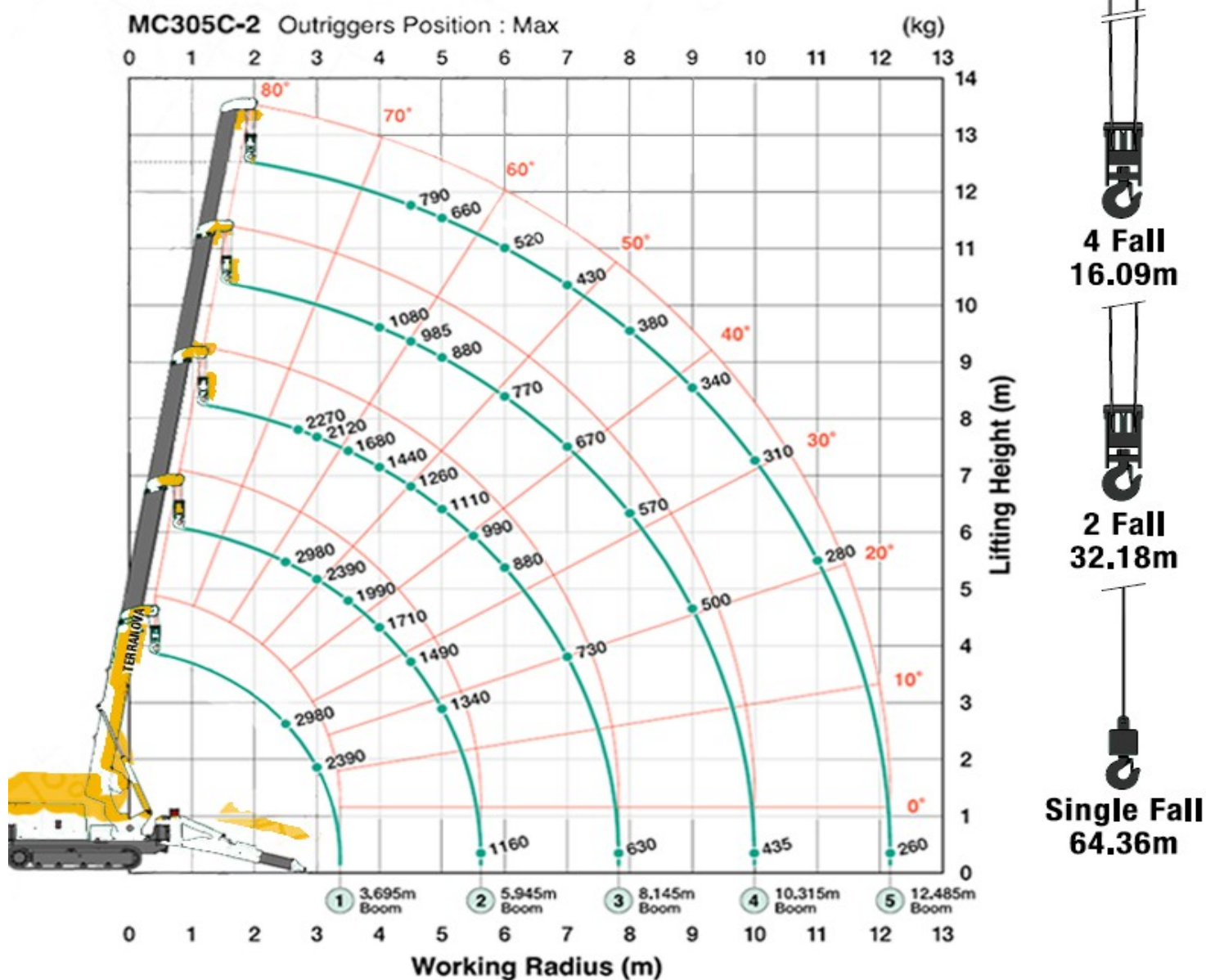
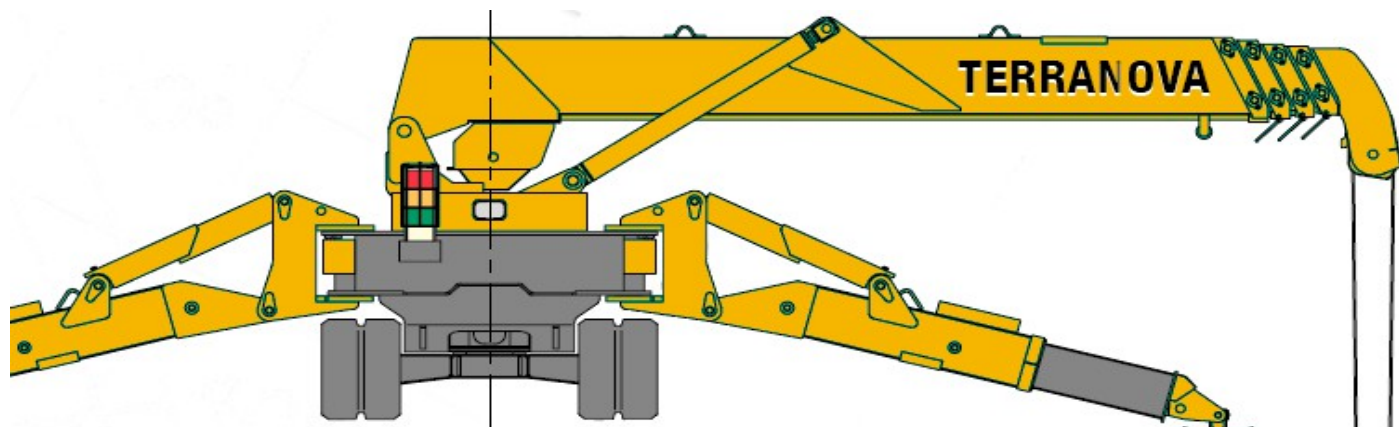




## Outrigger Spread Dimensions



# Main Boom – Duty Chart (kg, m)



The Working Range Chart does not take into account boom deflection under load.

## Main Boom – Load Charts (kg, m)

### Total rated load Outriggers at Maximum position

5.945m boom		8.145m boom		10.315m boom		12.485m boom	
Working radius (m)	Total rated load (kg)	Working radius (m)	Total rated load (kg)	Working radius (m)	Total rated load (kg)	Working radius (m)	Total rated load (kg)
< 2.5	2980	2.7	2270	4.0	1080	< 4.5	790
3.0	2390	3.0	2120	4.5	985	5.0	660
3.5	1990	3.5	1680	5.0	880	6.0	520
4.0	1710	4.0	1440	6.0	770	7.0	430
4.5	1490	4.5	1260	7.0	670	8.0	380
5.0	1340	5.0	1110	8.0	570	9.0	340
5.62	1160	5.5	990	9.0	500	10.0	310
		6.0	880	9.99	435	11.0	280
		7.0	730			12.16	260
		7.82	630				

### Total rated load Outriggers at Intermediate position

5.945m boom		8.145m boom		10.315m boom		12.485m boom	
Working radius (m)	Total rated load (kg)	Working radius (m)	Total rated load (kg)	Working radius (m)	Total rated load (kg)	Working radius (m)	Total rated load (kg)
< 2.5	2980	2.7	2270	4.0	1060	< 4.5	780
3.0	2390	3.0	2090	4.5	950	5.0	650
3.5	1960	3.5	1680	5.0	860	6.0	500
4.0	1680	4.0	1420	6.0	750	7.0	410
4.5	1380	4.5	1240	7.0	630	8.0	360
5.0	1140	5.0	1070	8.0	490	9.0	320
5.62	950	5.5	950	9.0	410	10.0	290
		6.0	800	9.99	350	11.0	260
		7.0	610			12.16	250
		7.82	520				

## Main Boom – Load Charts (kg, m)

Total rated load Outriggers at Minimum position							
5.945m boom		8.145m boom		10.315m boom		12.485m boom	
Working radius (m)	Total rated load (kg)	Working radius (m)	Total rated load (kg)	Working radius (m)	Total rated load (kg)	Working radius (m)	Total rated load (kg)
< 2.5	2980	2.7	2270	4.0	1060	< 4.5	780
3.0	2350	3.0	2090	4.5	950	5.0	650
3.5	1800	3.5	1680	5.0	860	6.0	500
4.0	1430	4.0	1370	6.0	680	7.0	410
4.5	1140	4.5	1120	7.0	530	8.0	360
5.0	950	5.0	910	8.0	420	9.0	320
5.62	790	5.5	790	9.0	340	10.0	290
		6.0	670	9.99	300	11.0	240
		7.0	510			12.16	210
		7.82	430				

The Total Rated Load Charts are based on the actual working radius including boom deflection. The weight of the hook (standard 4 fall - 30kg) must be included as part of the load shown in the Total Rated Load Charts.

When using two fall or single fall hooks, use the appropriate four fall Total Rated Load Chart above. but with a maximum load of: Two Fall - 1480kg, Single Fall – 750kg.

## Main Boom – Load Charts (kg, m)

Total rated load with Outriggers at Maximum position with 850kg Searcher Hook

	3.695m boom	5.945m boom	8.145m boom	10.315m boom	12.485m boom
Working radius (m)	Total rated load (kg)				
2.5	850	850			
2.7	850	850	850		
3.0	850	850	850		
3.8	850	850	850		
4.0		850	850	850	
4.5		850	850	850	750
5.0		850	850	850	620
6.1		850	840	700	480
7.0			720	630	400
8.3			560	520	340
9.0				470	310
10.4				390	260
11.0					250
12.6					220

# MC305 Specifications

<b>Capacity</b>	2.98t x 2.5m	Maximum
<b>Working Radius</b>	12.165m x 260kg	Maximum
<b>Lifting Height</b>	15.52m x 790kg	Maximum
<b>Dimensions</b>	4.29m x 1.28m x 1.7m	
<b>Weight</b>	MC305 3900kg (CRM) Hook Block 30kg	
<b>Hook Speed</b>	54m/min (1 single fall line) 13.5m/min (4 falls)	
<b>Telescopic System</b>	Fully auto 5 section boom Boom Length 3.7m – 12.49m Telescoping Speed 8.8m / 26sec	
<b>Boom Hoist System</b>	0 – 80 degrees / 14.5 sec	Hoist angle / speed
<b>Slew System</b>	360 degrees / 2.4 rpm	
<b>Outrigger System Length</b>	Front 4.5m, Rear 4.4m	Extension and setup by hydraulic cylinders
<b>Traction System</b>	0 – 2.8km/hr 23 degrees of Gradability 1.75m x 0.3m track dimensions 0.37kgf / cm <sup>2</sup> (CRM)	Hydraulic Motor driven
<b>Engine</b>	3 cylinder water cool diesel 40L Fuel tank	
<b>Safe load indicator</b>		
<b>Standard Equipment</b>	Overwind protection, Hydraulic Safety Values, level, tilt alarm, EMO switch, travel lock lever, outrigger interlock system, moment limiter, working status lamp, hour meter, 4-fall / 2-fall hook block, digital feedback remote control, data logger	



